

# FALL FLU CLINICS



*Also available:*

**Pneumonia, \*Shingles,  
COVID-19 (Moderna)**

*\*uninsured or underinsured (Medicare part A & B only  
without supplemental insurance & gross household  
income at or below 300% of the FPL)*

- *Open to the public*
- *Pre-registration is BEST!*
- *Walk-in service is not guaranteed*

## Upcoming Clinics at RC Free Clinic (145 State Street, Rutland)

**October 4 (9-Noon)**

**October 18 (2-5 pm)**

**October 29 (9-11 am)**

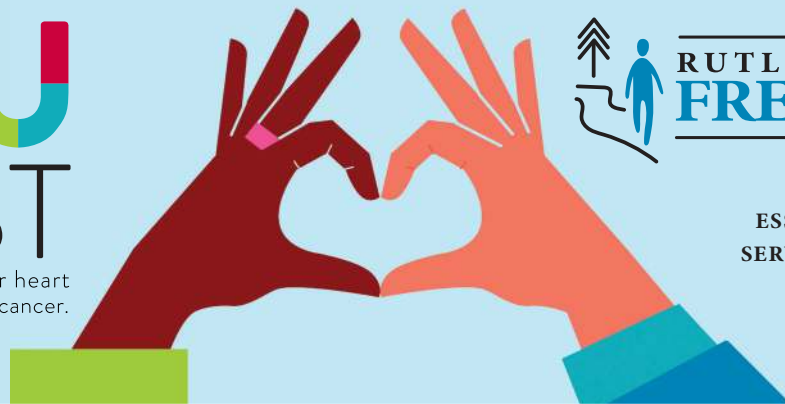
**November 1 (9-Noon)**

**November 19 (9-11 am)**

Vaccinations are always available during our regular medical clinics.  
Please contact us for more information.

**YOU  
FIRST**

Screening and support for heart  
disease, breast and cervical cancer.



**RUTLAND COUNTY  
FREE CLINIC**

*A path to good health.*

ESSENTIAL HEALTH CARE  
SERVICES FOR UNINSURED  
& UNDERINSURED  
ADULTS LIVING IN  
RUTLAND COUNTY

For more information about the **YOU FIRST** program or other RCFC services please call  
**802-775-1360 ext. 1** or visit [www.rutlandcountyfreeclinic.org](http://www.rutlandcountyfreeclinic.org)